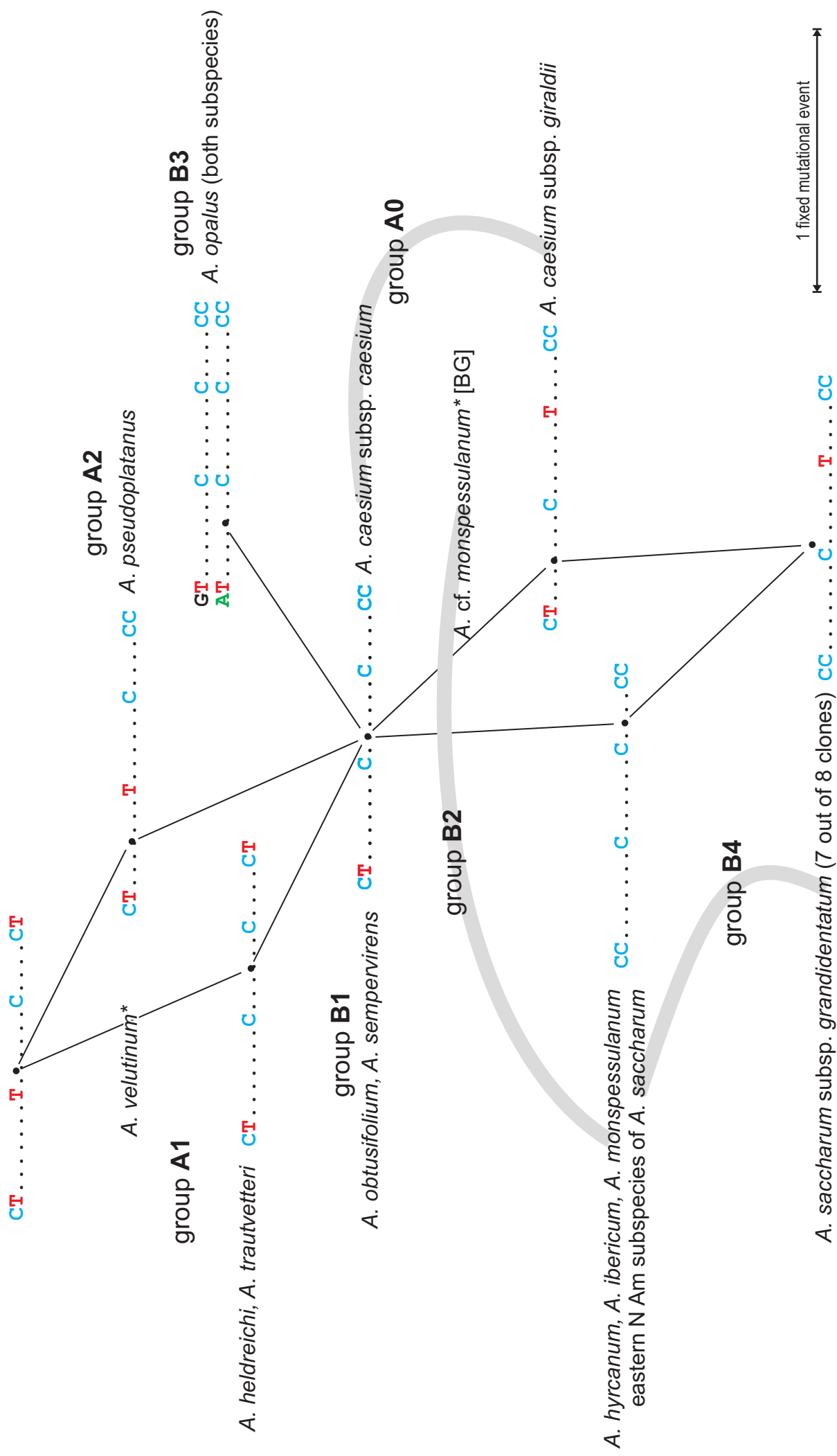
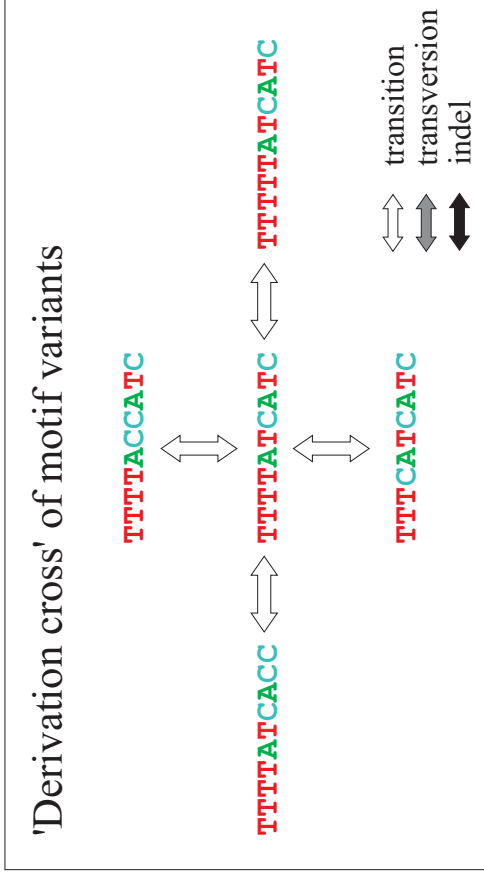


# SV1 motif

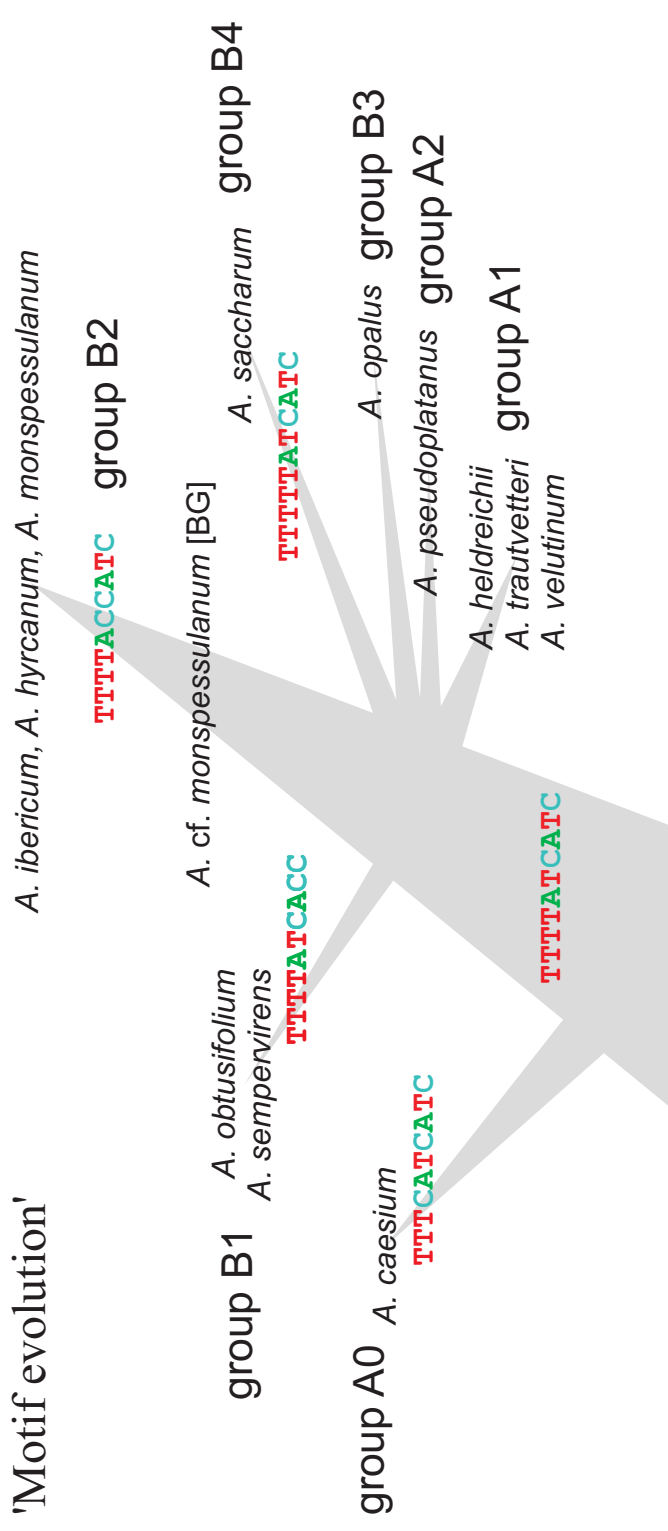


\* Taxa placed along edges are polymorphic for this motif.

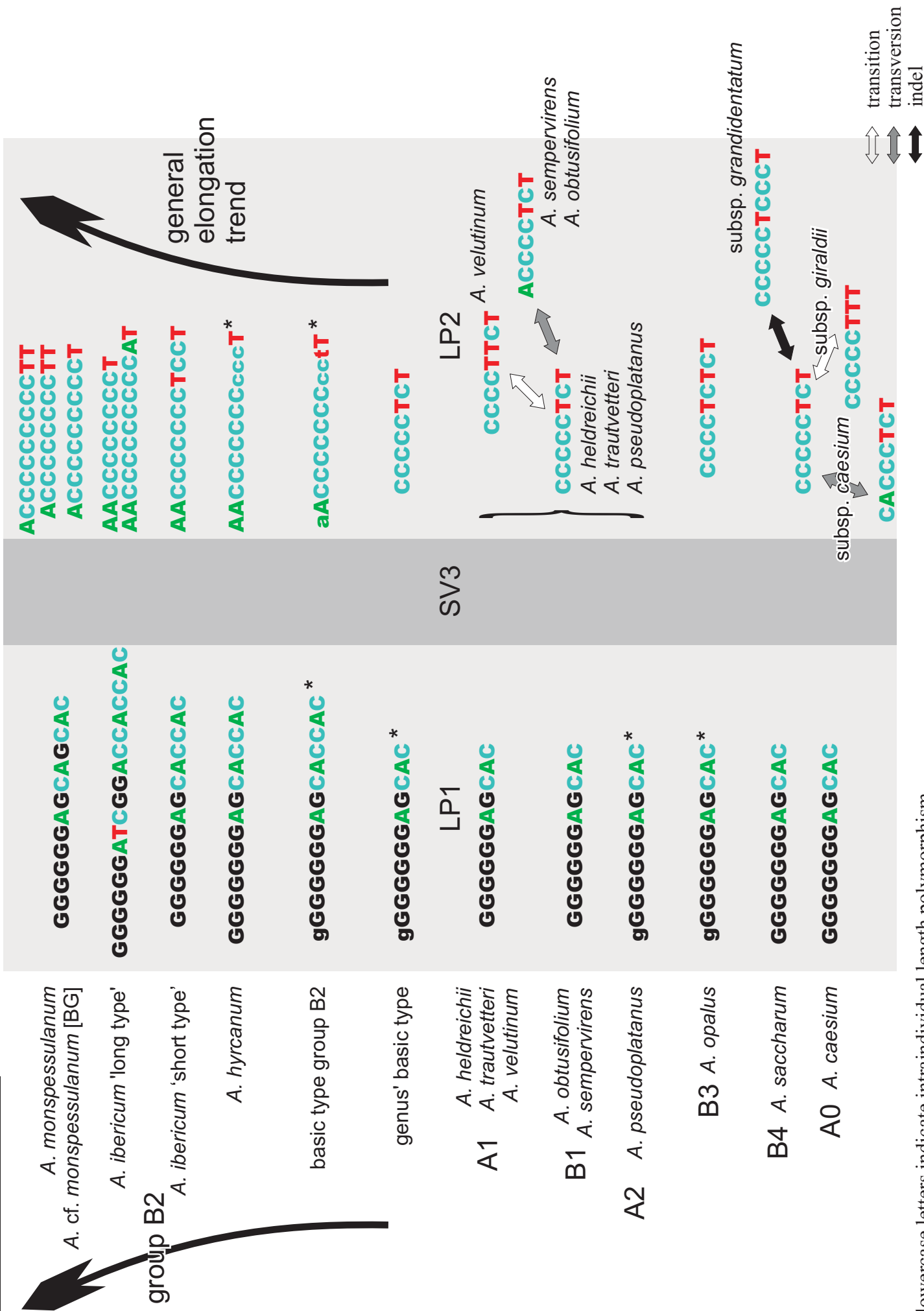
# SV2 motif



## 'Motif evolution'

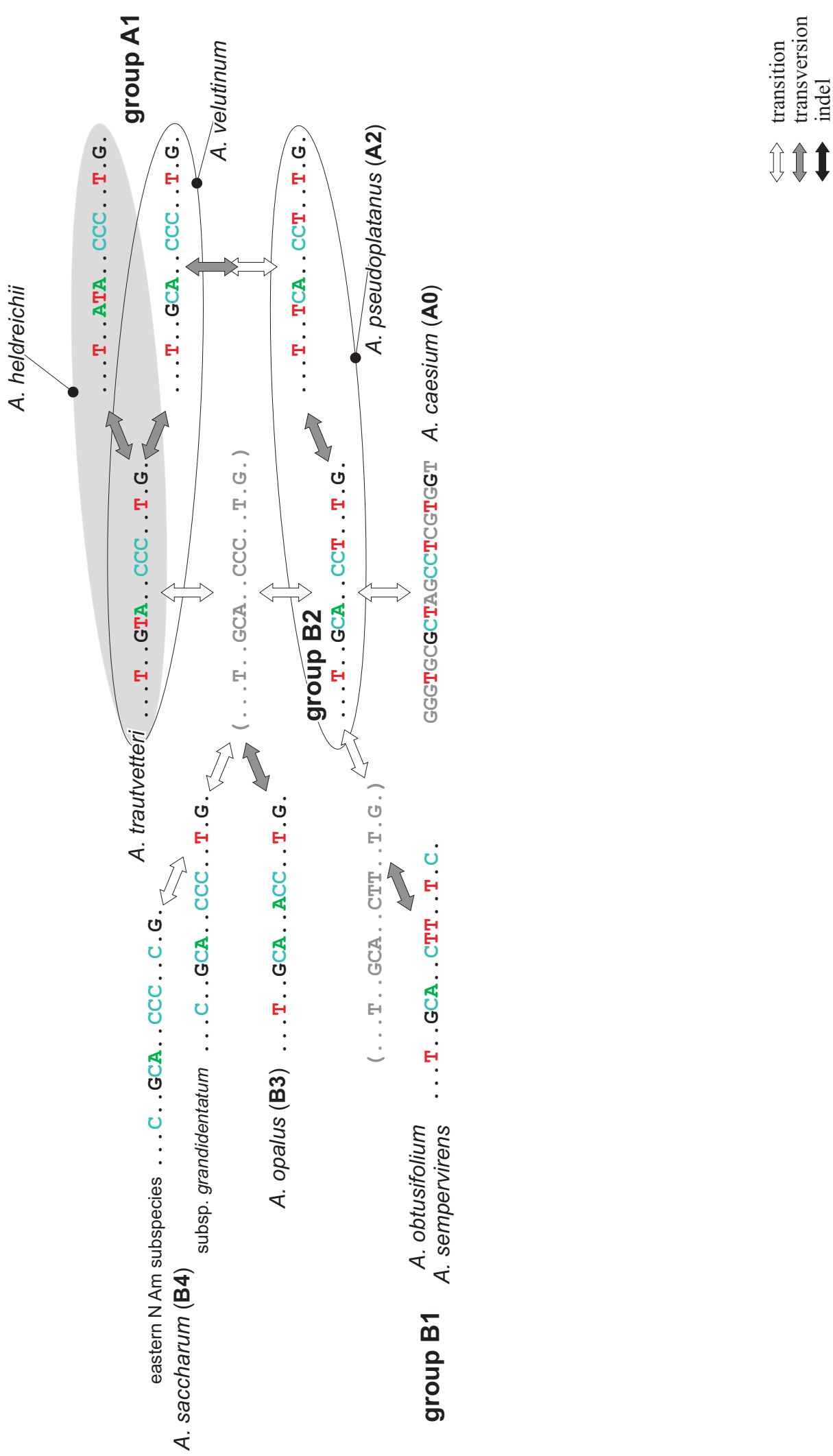


# LP1+LP2 motives

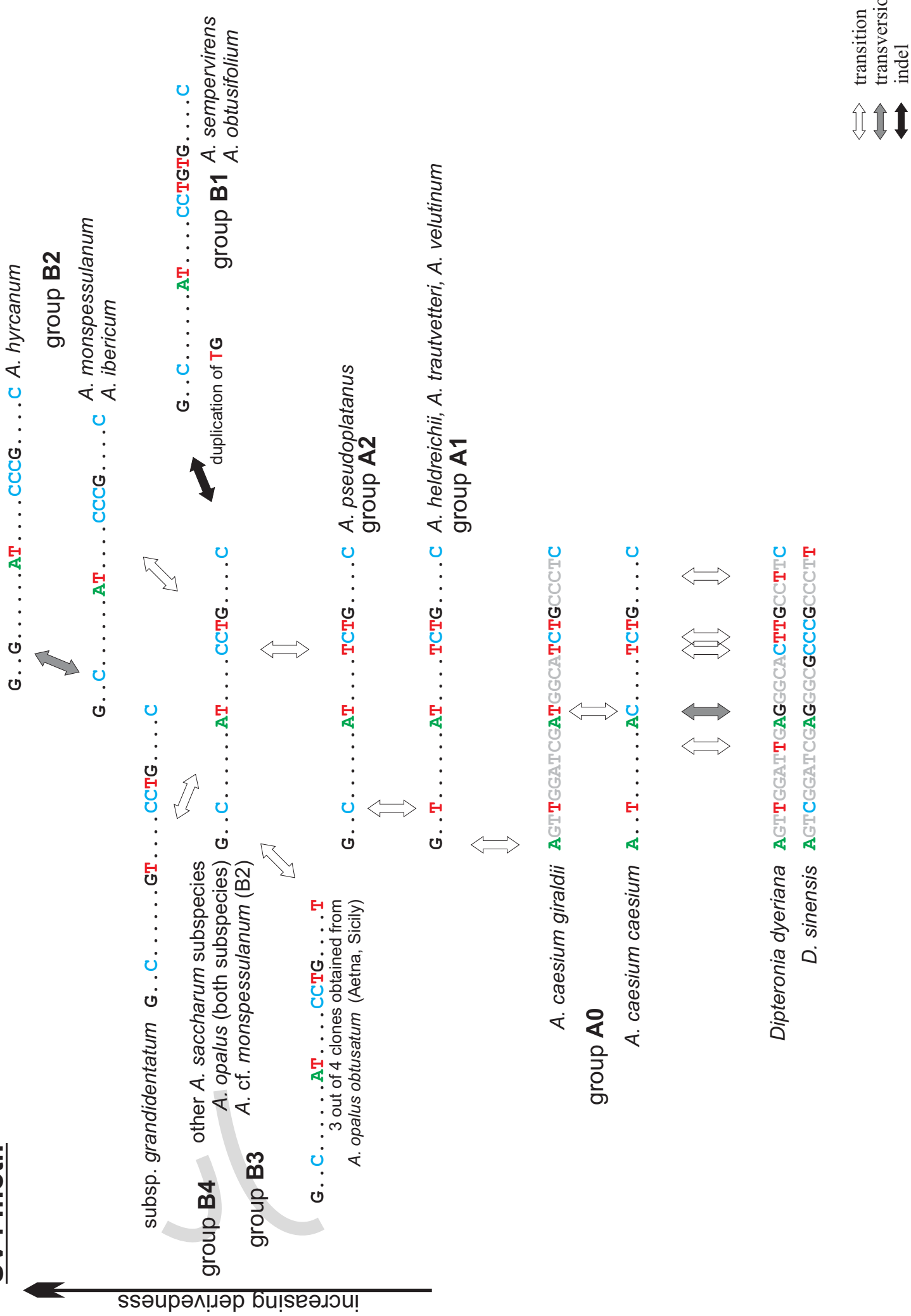


\* lowercase letters indicate intraindividual length polymorphism

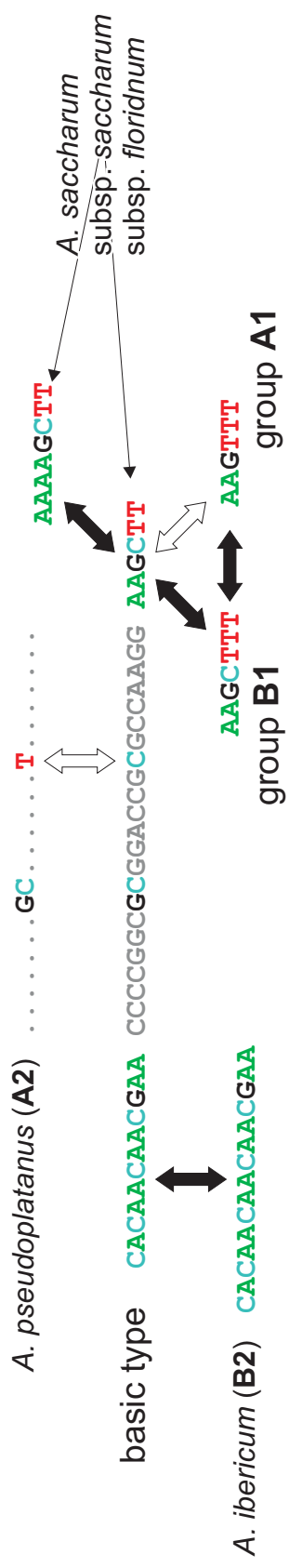
# SV3 motif



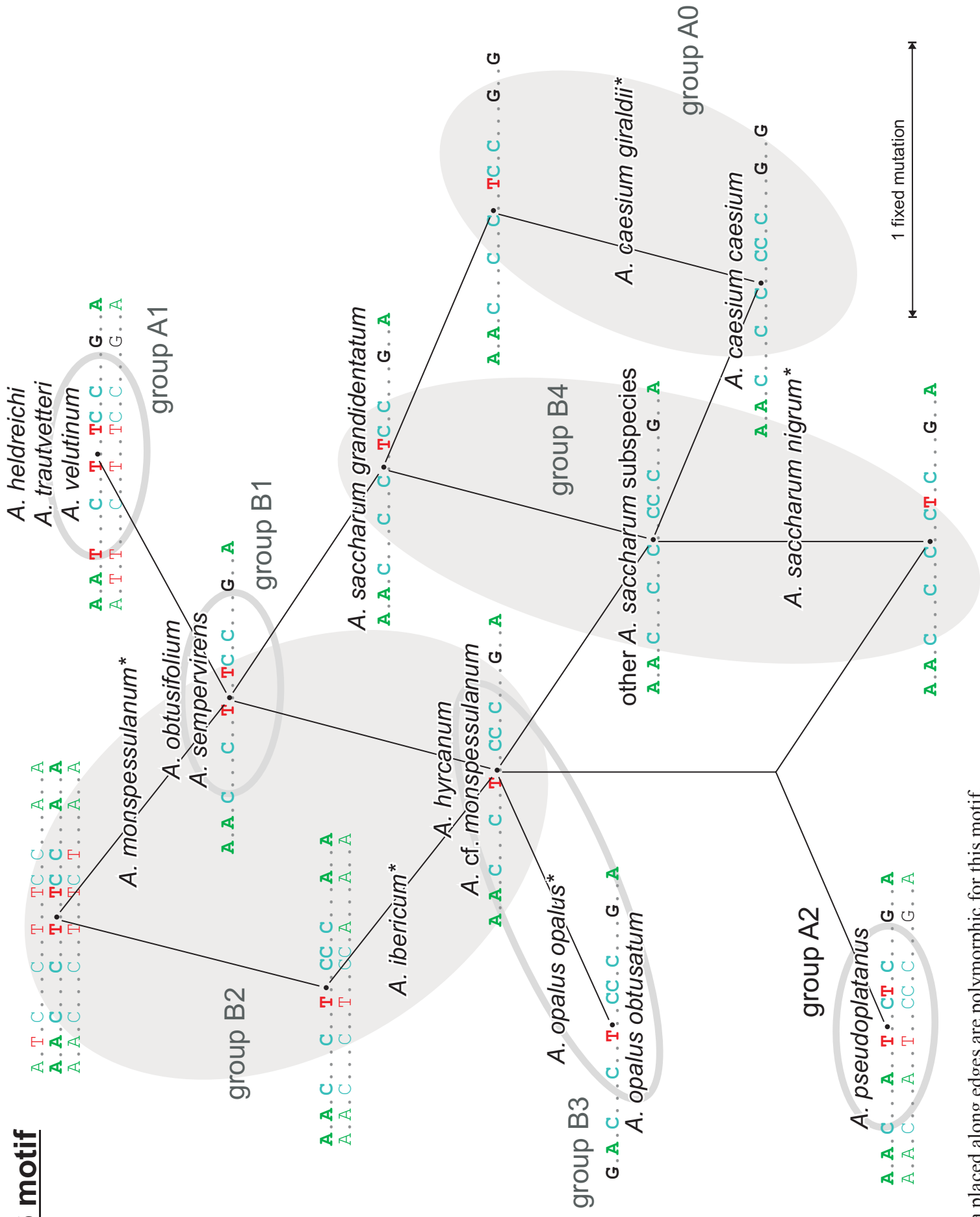
# SV4 motif



# SV5 motif

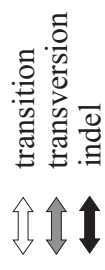
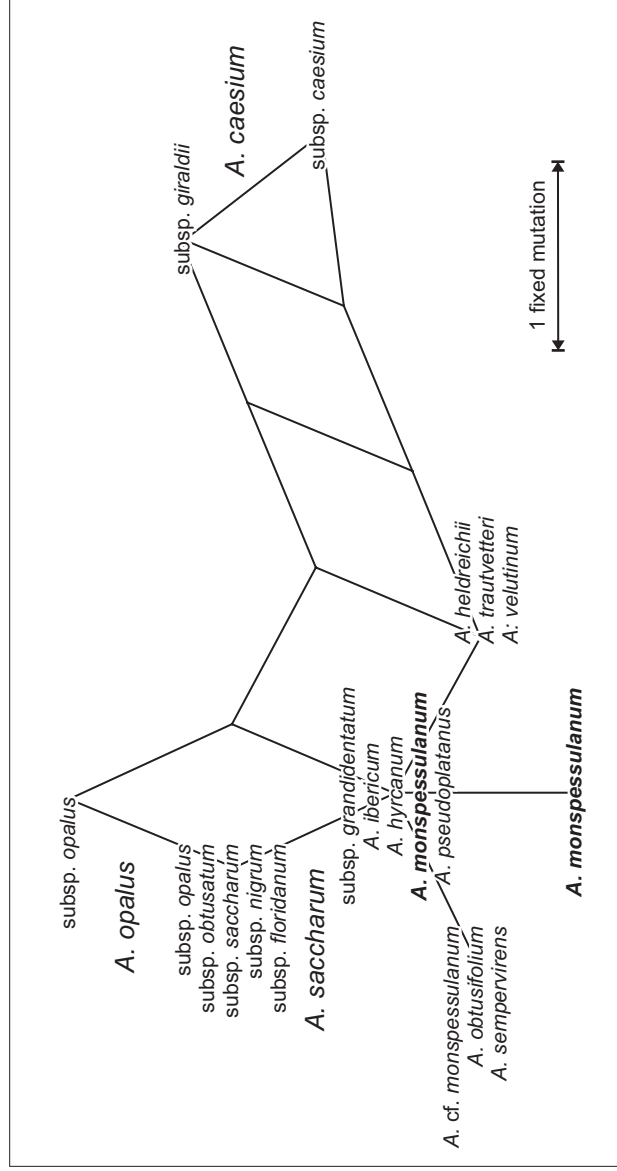
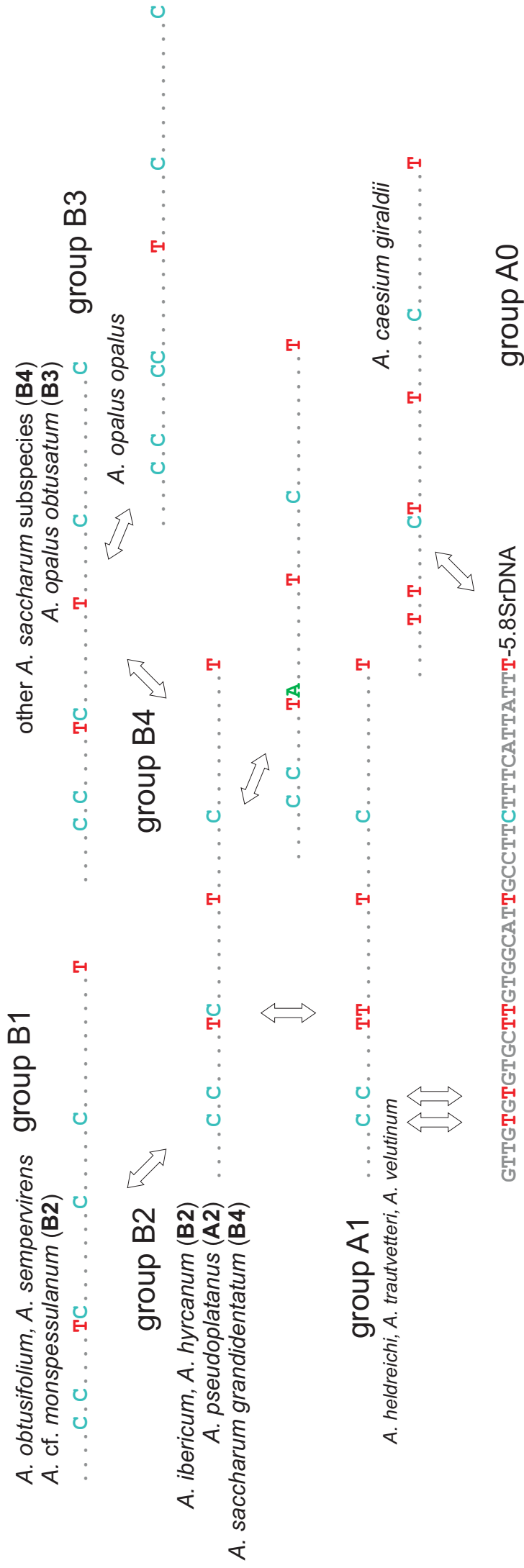


# SV6 motif



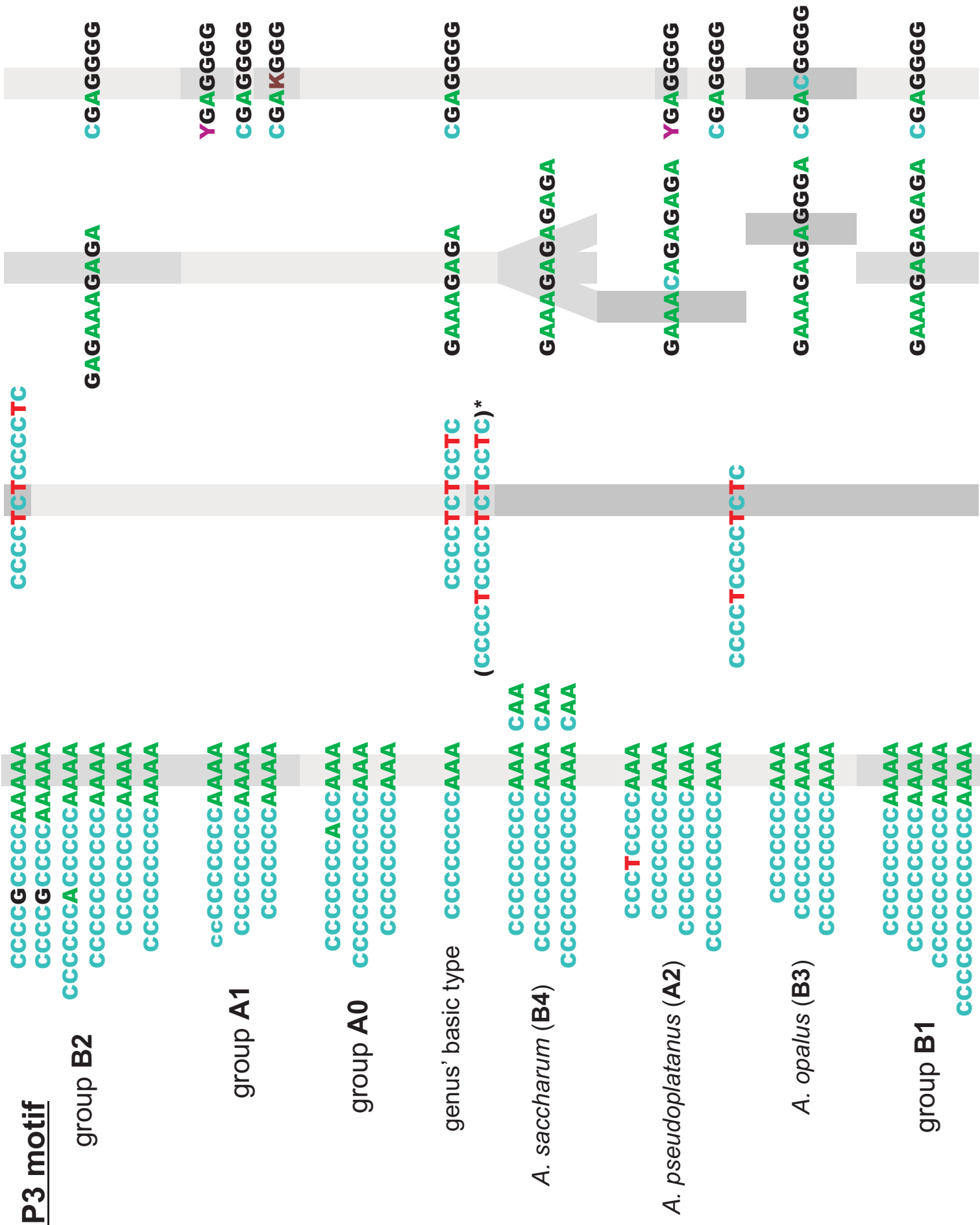
\* Taxa placed along edges are polymorphic for this motif.

# SV7 motif





# LP3 motif



\* possible intermediate state not realized in extant taxa

# SV8 motif

*A. caesium* (A0)    CCG **TGGG** <6nt> **C** <13nt> **GCC** <8nt> **C**



basic type of all other taxa

unmodified in *A. obtusifolium*, *A. sempervirens* (B1)  
*A. cf. monspessulanum*, *A. hyrcnum* (B2)  
*A. opalus* (B3), and *A. saccharum* (B4)

CCG **TGGG** <6nt> **T** <13nt> **GCC** <8nt> **C**

CC**A** **TGGG** <6nt> **T** <13nt> **GCT** <8nt> **C**



*A. heldreichii*, *A. trautvetteri*, *A. velutinum* (A1)

CC**G** **TGGG** <6nt> **T** <13nt> **GTC** <8nt> **T**

CC**TG** **TGGG** <6nt> **T** <13nt> **GCC** <8nt> **T**

CC**G** **TGGG** <6nt> **T** <13nt> **GTC** <8nt> **T**



*A. pseudoplatanus* (A2)\*  
in 3/38 clones  
in 1/38 clones

\* and a single *A. sempervirens* clone

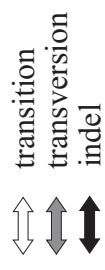
CC**G** **TGGG** <6nt> **T** <13nt> **GCC** <8nt> **C**



*A. monspessulanum* (B2)



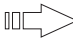
*A. ibericum* (B2)    CCG **TGGG****TGGG** <6nt> **T** <13nt> **GCC** <8nt> **C**  
CCG **TGGG****TGGG** <6nt> **T** <13nt> **GCC** <8nt> **C**

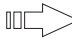


## SV9 motif

*A. heldreichii*, *A. trautvetteri*, *A. velutinum* (**A1**) C...**TGT.GT**..G...**TG**..C.....**A**  
*A. monspessulanum* (**B2**)

 *A. ibericum*, *A. hyrcanum* (**B2**) **A**...TGT.GT..G...TG..C.....**A**  
*A. cf. monspessulanum* (**B2**)




 *A. caesium* (**A0**) C...**CGT**.GT..G...TG..C.....**A**

 *A. opalus* (**B3**) C...TGT.**GC**..G...TG..C.....**A**

   *A. sempervirens*, *A. obtusifolium* (**B1**) C...TGT.**AC**..**A**..**CG**..C.....**A**

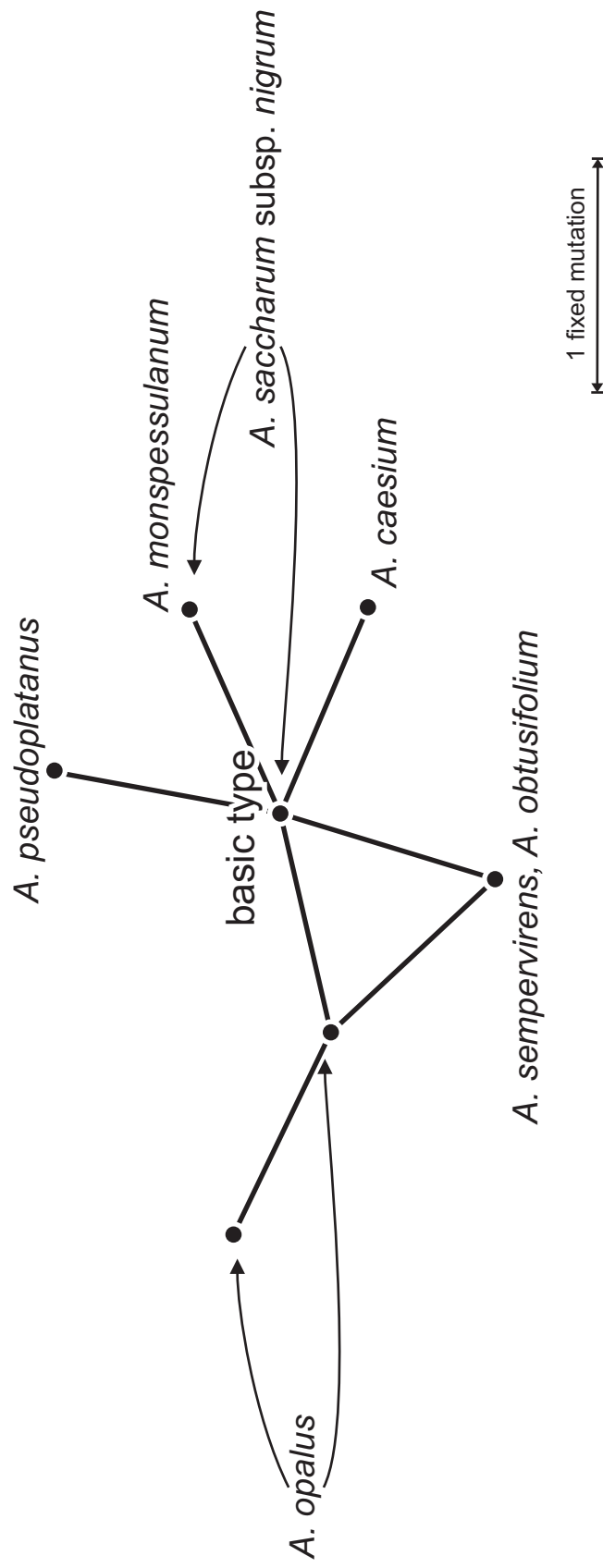
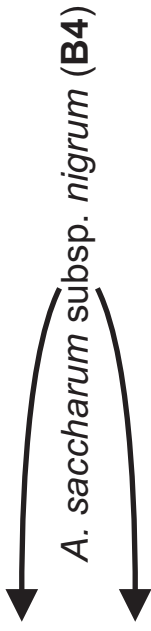
 *A. pseudoplatanus* (**A2**) C...TGT.GT..G...**TA**..C.....**A**

 *A. saccharum* (all subspecies, **B4**) C...TGT.GT..G...TG..C.....**G**

 transition  
 transversion  
 indel

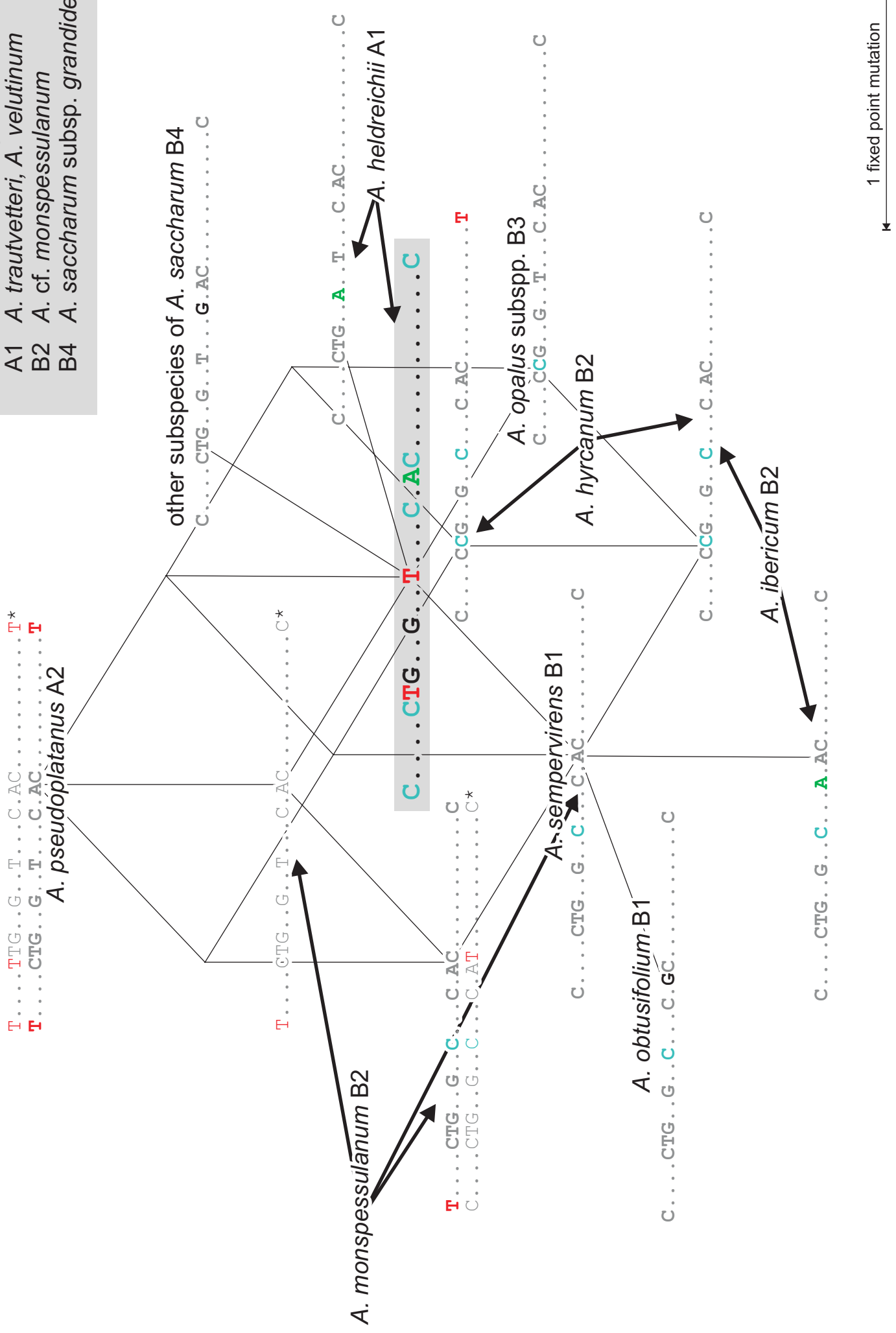
# SV10 motif

subspecies of <i>A. caesium</i> (A0)	AAA	C..CG.....C....GT	TAATAA
basic type all other taxa	AAA	C..CG.....C....GC	TAA <b>TAA</b>
<i>A. monspessulanum</i> (B2)	AAA	C..CA.....C....GC	TAATAA
<i>A. pseudoplatanus</i> (A2)	AAA	C..CG.....C....GC	TAATAA
<i>A. sempervirens</i> , <i>A. obtusifolium</i> (B1)	AAA	C..CG.....C....GC	TAA <b>AAA</b>
subspecies of <i>A. opalus</i> (B3)	AAA AAAA	C..CG.....C....GC C..CG.....C....GC	TAA <b>TAA</b> TAA <b>TAA</b>



# SV11 motif

- basic type found in ...
- A0 *A. caesium* subspecies
  - A1 *A. trautvetteri*, *A. velutinum*
  - B2 *A. cf. monspessulanum*
  - B4 *A. saccharum* subsp. *grandidentatum*



1 fixed point mutation

\* Motif variant obtained from a single individual or cloned ITS sequence of either *A. monspessulanum* or *A. pseudoplātanus*